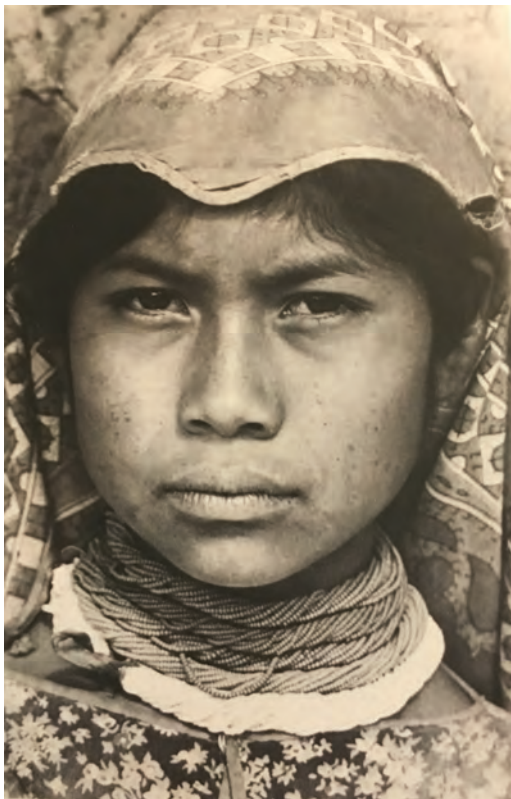


# THE FLEA



© John Christian

CHERRYWOOD PHOTOGRAPHER  
JOHN CHRISTIAN  
JOURNEY TO SACRED PLACES... PG 8

AUSTIN'S

**CODENEXT**  
SHAPING THE AUSTIN WE IMAGINE

WHAT DOES IT MEAN FOR  
OUR HOOD? ...PG 4



© Karen Maness

CHERRYWOOD ARTIST  
KAREN MANESS... PG 9

AUTHOR DARRYL WIMBERLY  
RECEIVES RAVE REVIEWS... PG 6

CHERRYWOOD  
QUARTERLY  
PUBLIC MEETING  
AUGUST 16 @ 6-7:30 PM

*at in.gredients*

2610 Manor Road

Grab your favorite beverage at  
6:00 - 6:30 PM and join us on the patio

Agenda includes:  
Steering Committee & FLEA Updates  
CodeNEXT Update (possible action)  
Pocket Park Update (action)  
Austin School of Film Presentation

Music to follow at 7:30 PM

# STAY CONNECTED



Outside at Threadgill's waiting for music, Janine Gropp

## QUARTERLY PUBLIC MEETING

**AUGUST 16, AT 6-7:30 PM**

2610 Manor Road, at

***in.gredients***

**Grab your favorite beverage at  
6:00 - 6:30 PM and join us on the patio**

**Agenda includes:**  
Steering Committee & FLEA Updates  
CodeNEXT Update (possible action)  
Pocket Park Update (action)  
Austin School of Film Presentation

***Music to follow at 7:30 PM  
cash bar by in.gredients***



Neighbors celebrating the grand opening of the Patterson Park Community Garden and the unveiling of Dance of the Cosmos, the new sculpture by Jennifer Chenoweth/Fisterra Studio. The May 27 celebration featured tacos, ice cream, a moonwalk, and screen printing. Next up, work on a Park Plan to guide fundraising and improvements over the next five years -- Jennifer Potter-Miller.

## CNA STEERING COMMITTEE

CHAIR Jim Reed, chair@cherrywood.org

VICE CHAIR Jonathan Schwartz

SECRETARY Sarah Sweeny

TREASURER Leyla Cohlmiya

MEMBERS Janine Gropp, Jules Kniolek, Ben Leffler,  
Emily Schwartz, and Erin Tassoulas.

Neighborhood Concerns: chair@cherrywood.org

Contact Steering Committee: steering@cherrywood.org

FLEA Newsletter: flea@cherrywood.org

## NEIGHBORHOOD ASSOCIATIONS

Cherrywood Neighborhood Association (CNA)	cherrywood.org
Blackland Community Development Corporation	BlacklandCDC.org
Mueller Neighborhood Association	MuellerNeighborhood.org
Schieffer-Willowbrook	sites.google.com/site/swnaaustin
Austin Neighborhood Council	ANCWeb.org/neighborhood-groups

## NEIGHBORHOOD GROUPS AND RESOURCES

Imagine Cherrywood	https://imaginecherrywood.org/
Friends of Austin Neighborhoods	ATXFriends.org
NeighborNet	groups.yahoo.com/group/NeighborNet
Duplex Nation Net	groups.yahoo.com/group/DuplexNation
CNA on Facebook	facebook.com/cna.austin
Cherrywood 78722 on Facebook	facebook.com/cherrywood78722
Nextdoor	Nextdoor.com

## RECURRING MEETINGS

2nd Mondays	6:30 pm	Friends of Willowbrook Reach and Patterson Park
4th Mondays	6:30 pm	Upper Boggy Creek Neighborhood Team
2nd Tuesdays	1:00 pm	Austin Neighborhood Council East Sector
	6:00 pm	Blackland Community Development Center
1st Wednesdays	7:15 pm	LUT Meeting at Taqueria Los Altos
2nd Wednesdays	6:30 pm	CNA Steering Committee Meeting
3rd Saturdays	10:00 am	Mueller Neighborhood Association Meeting

## CHERRYWOODERS AT THE MAY 2017 GENERAL ASSEMBLY NEIGHBORHOOD MEETING

*Cherrywood writer Susan Karnovsky and photographer John Christian. See Susan's interview with John on PAGE 8*



*Cherrywooders at the May meeting at Ingredients*



*CNA Chairman Jim Reed*



## GRACKLE GREEN PLAYGROUND UPDATE

By Lindsay Olinde

The enthusiasm for this community project is impressive! Thank you to the many neighbors that completed the June survey. The planning team is finalizing plans based on the survey results, and will present the design for CNA approval on August 16. We hope to see you at that meeting!



*Lindsay Olinde providing information on the proposed Grackle Green pocket park.*

Please email [gracklegreenatx@gmail.com](mailto:gracklegreenatx@gmail.com) for more information.

## LUT COMMITTEE IS UP & RUNNING WITH FOCUS ON POTENTIAL IMPACTS OF CODENEXT

By Girard Kinney, AIA  
Chair, Land Use and Transportation Committee

The CNA LUT committee, upon the request of the CNA Steering Committee, has restarted and has met twice in 2017. At present, we are meeting at **Taqueria Los Altos at 7:15pm the first Wednesday of each month**, so please join us!

Currently, we are re-establishing the process by which we respond to upcoming projects in the neighborhood. Possibly the most important issue we are addressing is CodeNEXT. We have been asked to make recommendations to the CNA Steering Committee and the Cherrywood Neighborhood Association regarding the proposed changes to the Land Development Code and its impact on our neighborhood. At the time of this writing, the new code maps were not yet available and there are several changes being considered. Without going into detail here, there is consensus among the LUT Committee members that there are serious flaws in the proposed code with respect to its potential impact.

As many will remember, Cherrywood has supported density on our corridors (Manor Road, Airport Blvd, part of E 38th½, and the IH35 frontage road), as our way of accepting our portion of the density that was coming and continues to come to Austin, as well as a way to absorb the density that would otherwise extend beyond the corridors to within the neighborhood.

Unfortunately, **the current CodeNEXT proposal** appears to do the opposite, i.e. **it provides little to incentivize density on our corridors, but rather drastically encourages density within the neighborhood. Among the provisions:**

- ◇ On lots as small as 5000 sf, 3 dwelling units could be built
- ◇ On lots as small as 10,000 sf, 6 dwelling units could be built
- ◇ Off street parking requirements would be further reduced

We have many other concerns, but we fear that these three items represent powerful incentives for more *tear downs*. The densification that should be occurring on the corridors will, instead, happen within our neighborhood.

It is important to emphasize that Cherrywood has always been accepting of our share of changes that are inevitable to Austin and which support the Imagine Austin goal of a Compact and Connected city. The LUT simply feels that the current proposal misses the mark in many ways, three of which are mentioned above.

We have reached out to our District 9 Council Member Mayor Pro-Tem Kathie Tovo and Mayor Steve Adler, both of whom have accepted our invitation to a **Special Called Meeting at 7:15pm on Tuesday, August 29** to address our concerns and answer questions from citizens in and around Cherrywood. The location is to be determined, but likely to be held at Maplewood Elementary Cafeteria or Servant Church. The final location will be announced on NeighborNet and Nextdoor, and posted on the Cherrwood.org website. A survey will have been circulated by the time you receive this FLEA, asking whether you plan to attend and what questions you would like our guest to address. **Please respond to the survey!**



## CODENEXT DRAFT 1: BRIEF CHERRYWOOD PRIMER

By Jules Kniolek and Sarah Sweeny

Here are a few examples of Austin's current Land Development Code (LDC), compared with proposed CodeNEXT T3N.DS zoning rules. The T3N.DS zone covers most of Cherrywood. Some rules may change in draft 2 of CodeNEXT.

See Austin's CodeNext site for more information  
[www.austintexas.gov/codenext](http://www.austintexas.gov/codenext)

CURRENT LAND DEVELOPMENT CODE	PROPOSED CODENEXT DRAFT 1
<b>NUMBER OF UNITS PER LOT</b>	
Two dwelling units on lots 5,750 square feet or larger	Up to three dwelling units on lots 5,000 square feet or larger, in most situations
	Six cottage units are allowed on lots 100' x 125' or larger
	Three cottage units are allowed on corner lots 50' x 125' minimum
<b>UNIT SIZE</b>	
Building form is required to fit inside a specific area (height, width, length), known as the "McMansion Tent"	Rules on dimensions are more specific and include the placement of the main structure and accessory building
<b>PARKING</b>	
Two off-street parking spaces per single-family house, one per accessory dwelling unit (ADU), zero for ADUS within ¼ mile of a business corridor	One off-street parking space per residential dwelling unit (except where reduced in some circumstances)
No restrictions on open parking setbacks, some restrictions on garage placement	Parking to be 30' from the front building setback line, cannot be in front of the front facade of the building, occupying no more than one third the width of the facade

# NEIGHBORHOOD NEWS

## MAPLEWOOD ELEMENTARY

By Jennifer Potter-Miller

Maplewood Elementary School is celebrating its 65th anniversary! To kick it off, Chris Levack installed the new Peace Sculpture at the school entrance this summer. The Delwood 2 artist is parent to two Maplewood alumns. The piece was donated by the Colimon Rappoport family in honor of their son Nicolas and the Mustang Class of 2017.

Join us for the public unveiling of the Peace Sculpture on Wednesday, September 6 at 8 a.m.

## PATTERSON PARK EVENTS

By Jennifer Potter-Miller

### Patterson Pool closes

Saturday, August 19

### Fitness in the Park: Free Family Yoga

@ Patterson Park near the community garden

Sunday, August 20, 9:30 a.m.

Sunday, September 17, 11 a.m.

Sunday, October 15, 11 a.m.

### Peace Sculpture Unveiling

@ Maplewood Elementary School (TBC)

Wednesday, September 6, 8 a.m.

### Patterson Neighborhood Park Plan

#### Community Meeting #2

@ Servant Church

Wednesday, September 13, 5:30pm

Wednesday, October 4, 5:30pm

Visit <http://friendsofpattersonpark.org/> for more info.



*At the Butterfly Bar, 2307 Manor Road, Janine Gropp*

## PLEASE WELCOME THE FLEA'S NEW DISTRIBUTION TEAM LEAD!



**T**RAVIS POWER is an architect with Specht Architects that has lived in Cherrywood with his wife Kim Power, architect at Dick Clark + Associates, and two daughters for 9 years. Travis is responsible for coordinating distribution of the Flea with the help of individual 'Flea Flicker' volunteers.

## THE FLEA NEEDS YOU!

The FLEA is looking for **Volunteer Reporters** to join the FLEA team. Write an article a year or a few per quarterly issue, it's up to you.

Do you like meeting local business people? Help us make sure we have their current ad content and encourage support of community by advertising in the FLEA as **Volunteer Advertising Manager**. We love our local businesses and want our readers to know about them.

Contact us at [flea@cherrywood.org](mailto:flea@cherrywood.org) or talk to us at the next neighborhood meeting on August 16th.

## CHERRYWOOD NEIGHBORHOOD NEWSLETTER

# THE FLEA

## VOLUNTEER STAFF

EDITOR, JANINE GROPP  
ASSISTANT EDITORS, JIM REED  
AND SARAH SWEENEY  
LAYOUT, JANINE GROPP  
THEATRE PAGES, MIKE SULLIVAN  
ACTING AD MANAGER, JIM REED

DISTRIBUTION, TRAVIS POWER  
AND THE FLEA FLICKERS

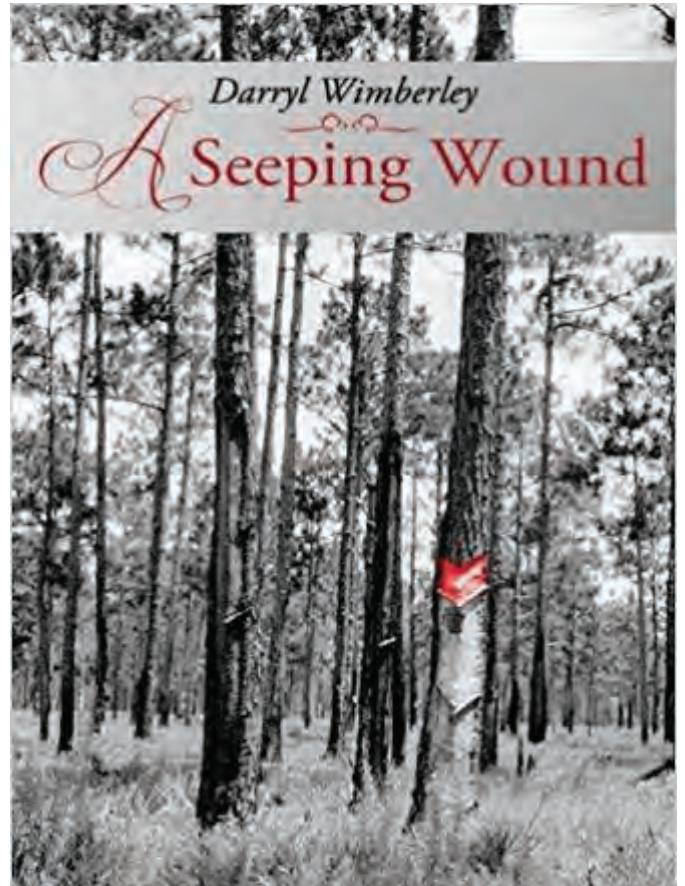


DARRYL WIMBERLEY

## CHERRYWOOD AUTHOR RECEIVES RAVE REVIEWS

Most Saturday and Sunday mornings you can find Darryl and his wife Doris in Cherrywood Coffeehouse with a wonderful group of neighbors discussing everything from weekend drives to small Texas towns to politics. Darryl always welcomes those sitting in the area to join in, which is how I got to know several Cherrywood Coffeehouse regulars. After a few times sipping coffee with the group, I learned one reason why Darryl is an engaging conversationalist, he researches a variety of topics and has written many books.

This one could be your next summer read!



### A SEEPING WOUND REVIEWED BY JOHN SENGER Forward Magazine Book Reviews

*A Seeping Wound* is a dark story of human cruelty, and an ode to the preeminence of the human spirit.

In his arresting novel, *A Seeping Wound*, Darryl Wimberley forcefully chronicles life in one of the many slave camps of the rural American South in the early twentieth century—a place of persistent violence and evil, though it also hosts moments of human kindness.

Martha LongFoot is the story’s narrator, a half Muscogee Indian raised in the camp. She is also the camp’s medicine woman, a hard-won status that keeps her safe from the sexual violence that pervades the place. Martha comes across as a character with dimension who is worthy of respect. Her robust narrative, enhanced by her powerful vocabulary and occasional biblical references, is compelling, if it sometimes strains credibility. She begins the book angry and distrustful of white people, and ends the tale by saving white folks who are unjustly enslaved. Martha brings some closure to the experience by asking “Why does one wound heal while another festers?”

Other characters in *A Seeping Wound* are less complex, including the ruthless Captain Riggs, who runs the turpentine camp. This man, and the thugs working for him, are predictably violent, uncaring, cruel, and unchanging. Veteran Prescott Hampton, though, shines, and he is set up in the narrative as a contrast to Martha, as a camp outsider. He comes from New York searching for his sister and brother-in-law, who are enslaved in the turpentine camp. Where Martha is poor, uneducated, and surprisingly literate, Hampton is educated and comes from a financially comfortable family headed by his father, a journalist.

But, Hampton and Martha are commonly flawed—each suffers from a seeping wound that must be healed. Wimberley adroitly uses this wound image as both a cause of pain and a source of productivity, whether in a pine tree being tapped for sap or a human gashed by the vicissitudes of life.

Disclosure: This article is not an endorsement, but a review. The author of this book provided free copies of the book to have their book reviewed by a professional reviewer. No fee was paid by the author for this review. Foreword Reviews only recommends books that we love. Foreword Magazine, Inc. is disclosing this in accordance with the Federal Trade Commission’s 16 CFR, Part 255.

## THE WIZARD NEXT DOOR!

Cherrywood resident Bill Karnovsky is playing the title role in the 59th annual Zilker Hillside Theater Musical, *The Wizard of Oz*. Come see the neighbor behind the curtain! Performances are Thursdays through Sundays at 8:15PM at Zilker Park. The final performance is on August 12 and may be the day you receive the FLEA, so hurry over to Zilker



Bill Karnovsky

2307 Manor Road  
Austin, TX 78722  
BOX OFFICE 512-478-5282  
<http://www.vorrep.org>



August 25 - September 4, 2017

### *Ocean*

Written and performed by Ebony Stewart

Ebony Stewart returns to The VORTEX with the world premiere of her new play, *Ocean*, August 25-September 4th, 2017. Weaving her evocative poetry, brilliant storytelling, feminist aesthetic, and spiritual depth, Ebony brings this new work to life with her unique and powerful performance. *Ocean* is a look into the life of how one woman is many; an affirmation that softness is not a weakness; and learning how to sink rather than drown.

## THE VORTEX SEASON 30: THIRTY YEARS OF TRUTH AND THUNDER 2017-2018

### Storm Still

September 08-24, 2017 | VORTEX

By Gabrielle Reisman, Directed by Rudy Ramirez  
Starring Andréa Smith, Jennifer Coy, and Amelia Turner  
Three sisters stage *King Lear* in their backyard and say goodbye to their father with blood, sweat, and beers.

### Vampyress

September 22 - October 21, 2017 | VORTEX & ethos  
A Gothic Opera by Chad Salvata, Directed by Bonnie Cullum  
Horror, mysticism, blood, and magic, based on the true story of Erzsebet Bathori, The Bloody Countess of Hungary.

### ICONS: The Lesbian and Gay History of the World, Vol. 1

October 04, 2017 | VORTEX Guest Artist

Written and Performed by Jade Esteban Estrada

### Erzsebet Bathori's Bloody Ball

Saturday, October 14, 2017 | VORTEX Fundraiser Event  
Costumes, food and drink, naked virgins, blood, dancing, Vampire Vignettes, silent auction, fabulous prizes, and a performance of *Vampyress*.

### P3M5 Plays

November 02-05, 2017 | VORTEX

Curated by Dr. Heather Barfield

Plurality of Privacy Project in Five-Minute Plays (P3M5), a transatlantic original plays project that focuses on a central question: "What does privacy mean to you in the digital age?" Facilitated and translated by the Goethe-Institut Washington.

### Linda Mary Montano's INTERACTIONARAMA:

November 10-11, 2017 | VORTEX Guest Artist

Internationally renowned performance artist, Linda Mary Montano, teams up with Austin artists. Not for those afraid of death. Viewer Discretion Advised.

INFO: 512-474-6379  
<http://teatrovivo.org>

Productions at The Emma S. Barrientos  
Mexican American Cultural Center and  
at ZACH Theatre



September 7-24, 2017

### *Enfrascada* by Tanya Saracho

Directed by Claudia Chávez

Thursdays - Saturdays at 8:00 PM; Sundays at 2:00 PM

Her world suddenly turned upside down, Alicia is devastated. Fortunately, her friends are there to help - by any means necessary. Together they seek the guidance of "señoras" and a little magic to help her heal and make things how they used to be. With an all-women ensemble, this touching comedy about a group of modern-day Latinas explores the magic of friendship.



3823 Airport Blvd. Suite D  
Austin, TX 78722  
BOX OFFICE 512-524-2870  
[info@citytheatreAustin.org](mailto:info@citytheatreAustin.org)  
[citytheatreAustin.org](http://citytheatreAustin.org)



## The 2017 - 2018 City Theatre Season The Year of the Director!

**The Mousetrap** by Agatha Christie October 2017

**The Seafarer** by Conor McPherson November 2017 (Austin premiere)

**Uncle Vanya** by Anton Chekhov January 2018

**Director's Choice Special Theatre Event** February 2018

**Bad Jews** by Joshua Harmon March 2018 (Austin premiere)

**As You Like It** by William Shakespeare April 2018

**Noises Off** by Michael Frayn May 2018

**Ruthless! The musical** by Marvin Laird and Joel Paley June 2018

**Playhouse Creatures** by April De Angelis July 2018 (Austin premiere)

**All My Sons** by Arthur Miller August 2018

**The Who's Tommy** by Des McAnuff and Pete Townsend September 2018

And one extra surprise hit show you don't want to miss!

MEET YOUR NEIGHBOR  
PHOTOGRAPHER

JOHN CHRISTIAN

By Susan Dias Karnovsky

Ask John Christian about his daily walks to the UT campus and he will tell you, "I like walking through this neighborhood. I like the name Cherrywood, the location, the nice folks who live here, and all of the old trees that give it so much beauty and shade, and homes for birds and the butterflies."

Born in Texas, John was raised in Mexico in the 1940s, mostly in Mexico City, mining towns, and pueblos in rural areas.



John Christian, Zacatecas, Mexico, 2016  
[San Augustin Church]



Martina, 1998 © John Christian

His parents gave him his first camera when he was a young boy. He traveled with them to many places like Pachuca, Cuernavaca, and later to sites not far from where the Monarch butterflies hibernate every winter.

John came to Austin after attending Sam Houston State University where he met Russell Lee, the first teacher of photography at UT. Then, inspired by the photographers Edward Weston and Tina Modotti, he returned to Mexico because "their photographs clicked on the lights in the ocean of my creative darkness. They focused on rural areas and indigenous people. Seeing their work inspired me to go back to Mexico with a camera and return to the places I knew as a boy."

In Mexico, John journeyed deep into to the Sierra Madre Occidental, the longest chain of mountain ranges or cordillera in the world, to live among the Huichol indigenous people. Soon after returning from this journey, John was awarded the prestigious University of Texas Dobie / Paisano Fellowship for his documentary work there.

"I lived and completely immersed myself in the Huichol world for many months that become years, experiencing their religion and their pantheistic cosmic view."

Later in 1977, John was invited to join Bill Calvert and Lincoln Brower on their iconic journey to locate the elusive

Monarch butterflies' over-wintering sites. As he recalls, "I was honored to act as their Spanish translator, interpreter, and travel advisor with my first-hand knowledge of life in the Sierra Madre.

It was spiritually transforming to walk into a fragrant pine-spruce forest and discover 14 million butterflies. It looked like a cathedral of nature... a sacred place."

Sacred places are a vital aspect of John's life. He is keeping a close eye on open-pit mining in Mexico that would decimate ancient, sacred sites belonging to his beloved Huichol family.

John continues his research and documentation for publications and exhibits, solo and collaboratively. His work has been featured in numerous journals and newspapers, including Texas Monthly, Popular Photography, Mexico Desconocido and Ecotropics.

As you read this, John is most likely at work completing *Sacred Places*, his extraordinarily beautiful collection of photographs and stories that reveal the spiritual essence of the Huichol culture, and the spiritual essence of John Christian. His photos are to be seen in "a special niche in the quiet of night when children and pets have gone to bed, images to be held in one's hand, sitting in a comfy place so you can be pulled straight into the image of another world."

The John Christian Photograph Collection is at UT's Dolph Briscoe Center for American History.



On a 3 day walk to market © John Christian



Suculima, 1974 © John Christian



## KAREN MANESS LOOK TO THE SKIES

You may already know Cherrywood resident Karen Maness from the East Austin Studio Tour where she welcomes friends and collectors into her private studio space for two weekends each year. Her painting home is affectionately named Rust Red Studio after husband Rusty and their little-red-headed son (then two) who built it for her.

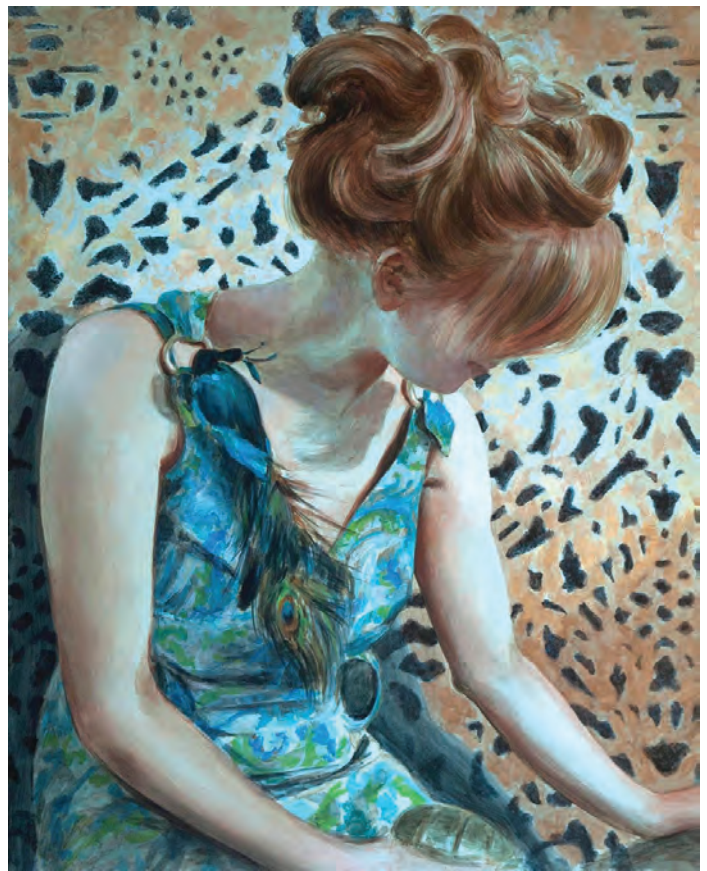
Karen Maness has shaped her life in celebration of art, a vehicle through which she strives to deeply connect with others. The means through which Maness creates and realizes her work is multifaceted, yet centers around the same core principles.

In her private studio practice, Maness creates expansive contemporary landscapes in an effort to capture moments of wonder when taking in the wide open western skies. These paintings are created to surround, comfort, and inspire the viewer, inviting them into the scene. They are meant to resonate and change the very nature of the spaces in which they are hung. With as much focus as Maness spends with an outward gaze to the skies, she is equally captivated in telling the intimate and honest stories of people, through her contemporary realist figurative work.

In her youth, Karen was profoundly affected by the power and presence of the murals woven through San Diego's Chicano Park, Balboa Park, and the Los Angeles freeways. Maness had formally studied art since the age of 8, at 18 she encountered her first vertical paint frame, a device used to support large theatrical backdrops as they are being painted. Seeing that open vertical canvas was a game changer. She too would become a monumental painter. Maness directed her focus on scenic art, scenic design, and monumental painting while continuing her studio practice. Her passion led her to a successful career as a scenic artist in the Los Angeles area and ultimately brought her to Austin, Texas. Maness is the Scenic Art Supervisor of Texas Performing Arts and lecturer at the University of Texas Department of Theatre and Dance, where she is honored to share her knowledge with future generations of artists.



This past year has been unprecedented for Maness. She just wrapped up a book tour to launch *The Art of the Hollywood Backdrop*, Regan Arts 2016, featured on Good Morning America's must read for 2016. It is a book written in celebration of Hollywood's unsung scenic artists in preservation and honor of



© Karen Maness

their craft. <http://www.reganarts.com/books/2016/the-art-of-the-hollywood-backdrop/>

She exhibited with her beloved tribe of Austin figurative painters in Davis Gallery's Faces of Austin Exhibit and is currently



© Karen Maness

preparing for a contemporary landscape exhibition at the Georgetown Art Center entitled *Wide Open* with Shawn Camp and Rebecca Bennett opening August 26, 2017. You can learn more about Karen and her work at [www.karenmaness.com](http://www.karenmaness.com)

See the FLEA online at [Cherrywood.org](http://Cherrywood.org) for the color version!

## ARE CATS SMARTER THAN DOGS?

LiveScience.com

Science doesn't have a clear answer on this one, so cat and dog lovers may forever debate whether Fluffy or Fido is brainier. But there are hints as to which fluff ball is most intelligent.

Cats' brains take up 0.9 percent of their body mass, compared with 1.2 percent for a dog's brain, but size doesn't necessarily matter here, experts say. That's because cats have 300 million neurons in their cerebral cortex, an area of the brain responsible for information processing. Dogs have 160 million neurons in that region.

However, it's hard to do experiments with cats because, well, they'd rather lick their paws than follow orders, scientists say. But one experiment showed that although both cats and dogs can solve puzzles to get food, cats will keep trying even if the puzzle is unsolvable, while dogs will go get humans to help them.

This doesn't mean either animal is smarter. It just shows the effects of how dogs were domesticated at least 20,000 years before cats were, and thus are more likely to interact with humans, the study researchers said.

## WHY DO DOGS SNIFF EACH OTHER'S BUTTS?

By David Freeman

Senior Science Editor, The Huffington Post

The answer to that question is a bit more complicated than you might imagine. According to a new video from the American Chemical Society, it's all about one canine literally sniffing out important information about the other—its gender, emotional state, diet, and more. Think of it kind of like speaking with



*Gato relaxing with his Airbnb guest, Boston, Janine Gropp*

chemicals, the video's narrator says, referring to the glandular secretions released by glands in a dog's anal sac. In fact, this butt-sniffing action is just one of many examples of chemical communication in the animal kingdom.

Of course, a dog's sense of smell is famously acute—10,000 to 100,000 times more acute than our own, according to the video. How can the sniffer make sense of the glandular secretions released by the sniffee's anal sac—without the poopy smell getting in the way? Dogs have a second olfactory system that's known as the Jacobson's organ. Its nerves direct the chemical information it detects directly to the brain so there's no interference from other odors.

**YOUR  
OTHER  
FAMILY  
DOCTOR**

— —

Locally Owned for  
50 years.

Located on the  
"Mueller Greenbelt"  
by I-35

**Austin Vet Hospital**

austinvethospital.com

**TROUBADOUR LANDSCAPE**

WAYNE KAMIN

CONSULTATION  
DESIGN  
RESTORATION  
INSTALLATION  
MAINTENANCE

XERISCAPE AWARD WINNER  
ORGANIC, NATIVE, AND  
NATURALIZED

512-736-3853  
TROUBADOURLAND@PEOPLEPC.COM

**PAW PAUSE**

Full Service Pet Staycations

**Dolly Ensey** *We live here!*  
Certified Treat Dispenser

**Tail Wag Ratings Available**

512.553.6729 pawpausepets@gmail.com

## LANDSCAPING TIPS

Wayne Kamin

This tip is good all year round! Clear away all grasses, weeds, and ground cover in a 1-foot circle around all free-standing trees and shrubs in your yard, as well as trees and shrubs in beds. That will help avoid hitting those plants at their bases with mowers, weed eaters, and other trimming tools. Cutting the base of plants makes them susceptible to infestation and reduces their ability for transpiration. Transpiration is the exchange between plants and the atmosphere of moisture and carbon dioxide going into the leaves, branches and trunks, and oxygen coming out. Trees such as Crepe Myrtles also send up little tree-looking shoots from their roots, the more their bases are damaged. Those root shoots absorb moisture and nutrients. Growth collars are those parts of the plants at ground level, where their roots transform into above-ground growth. Basil breaks will take up the water, nutrients, and energy from what otherwise would rise up the trunk, so avoiding damage keeps your plants healthy!

Cherrywood's Wayne Kamin of Troubadour Landscaping received Master Composter Certification/Austin Community Gardens in 1992, Master Gardener Certification/Travis County Ag. Ext. Service in 1993, Xeriscape award for professionally designed and installed landscape/City of Austin in 1998, and Educator of the year award/Austin Habitat for Humanity in 2003-4.



## AUSTIN'S WATER WATCHDOG SINCE 1992

The Save Our Springs Alliance works to protect the Edwards Aquifer, its springs and contributing streams, and the natural and cultural heritage of the Hill Country region and its watersheds, with special emphasis on Barton Springs.

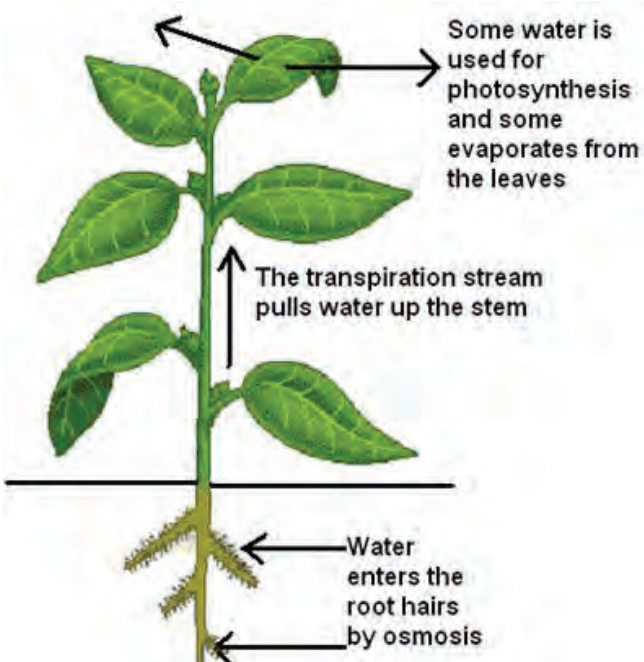
The Save Our Springs Alliance sprung to life in 1990 as a loose coalition of citizens fighting a massive development proposal for the Barton Creek watershed. On June 7, 1990, more than 1000 citizens signed up to speak to Austin city council in opposition to the planned 4,000-acre Barton Creek PUD. After an all-night meeting, council unanimously rejected the PUD, and a movement began to strengthen the 1986 Comprehensive Watersheds ordinance under the acronym SOS: "Save Our Springs".

Organized in 1992 as the Save Our Springs Coalition, we wrote and petitioned for the Save Our Springs Ordinance to protect the quality of water coming off of development in the fragile Barton Springs watershed. With the voter approval of the SOS Ordinance, developers went on the attack at the court house and the Texas Capitol. We incorporated as the Save Our Springs Legal Defense Fund in 1993 to defend developers' attacks on the SOS Ordinance. Expanding our scope to include building awareness and alliances throughout the Austin area, we became the Save Our Springs Alliance in 1997. We routinely work with local conservation groups to advocate for the protection of Barton Springs and the Edwards Aquifer.

Save Our Springs Alliance  
905 W. Oltorf St. Suite A, Austin, TX 78704  
Reach us by phone at (512) 477-2320  
Email us: [sosinfo@sosalliance.org](mailto:sosinfo@sosalliance.org)

## SUPPORT LOCAL MUSICIANS BY CONTRIBUTING TO HAAM

The Health Alliance for Austin Musicians ([myhaam.org](http://myhaam.org)) has helped over 4,000 musicians access over 52,000 healthcare appointments valued at over \$30 million dollars since they began in 2005. These include routine dental work, doctor visits and prescriptions, psychiatric counseling sessions, eye exams, out-patient procedures, specialist referrals, hearing screenings and more.



Transpiration, OnlineSciences.com

SUPPORT NEIGHBORHOOD BUSINESSES!



**STAR SEEDS CAFE**  
OPEN 24 HOURS  
3101 I-35 Frontage Rd  
Austin, TX 78722

BRING THIS COUPON IN FOR  
**15% OFF**




**chris, writer/drummer**  
shortcut, \$25

**i austin**

for all locations and stylist schedules, visit [birdsbarbershop.com](http://birdsbarbershop.com)



**G&C**  
Cleaners & Laundry  
"Your Satisfaction Is Our Priority"

**Albert Gonzales, Jr.**

12-478-2460  
[www.gcdrycleaners.com](http://www.gcdrycleaners.com)

1406 E. 38 1/2 Street  
Austin, Tx 78722



**K&A** Kinney & Associates  
URBAN DESIGN | ARCHITECTURE | PLANNING

Girard Kinney, AIA

[glrard@kinneyarchitects.com](mailto:glrard@kinneyarchitects.com)  
Office: 1000 E. 6th St., Suite C | Austin | 78702  
Mall: P.O. Box 6456 | Austin | 78762-6456  
Office: 512.472.5572 • Cell: 512.657.1593 • Home 512.478.5042



**78722**

**in.gredients**  
not just a grocery store

2610 Manor Rd  
Mon-Sat: 9am-10pm  
Sun: 10am-10pm



MANOR ROAD

SUPPORT NEIGHBORHOOD BUSINESSES!



# THUNDERBIRD COFFEE



2200 Manor Rd 512-472-9900

A gift to you from us:  
One free house drink

Offer Expires  
2/28/2017

**PLAY TENNIS!**

**ADULT/JUNIOR TENNIS  
PRIVATE & GROUP LESSONS**  
MIKE CLARK, USPTA, MBA AND MARGIE STEELE, USPTA

FOR INFORMATION, CONTACT US AT: 512-477-7773

PHARR TENNIS CENTER - 4281 BROOKVIEW ROAD  
CONTACT US TODAY AT 512-477-7773



**CHERRYWOODCOFFEEHOUSE.COM**

OPEN EVERY DAY 7AM - MIDNIGHT  
HAPPY HOUR EVERY DAY 3PM - 7PM

SUPPORT NEIGHBORHOOD BUSINESSES!

MICHAEL KRISCHKE,  
Owner

# MIKE'S PRINT SHOP

512.467.6655 fax 512.467.0334  
6448 Hwy 290 East, Ste. A-112 • Austin, Texas 78723  
www.mikesprintshop.net sales@mikesprintshop.net

PrimeLending   
A PlainsCapital Company

## WHY CHOOSE PRIMELENDING AS YOUR LENDER?

WE'RE THE MORTGAGE-ONLY EXPERT THAT TREATS  
YOU LIKE A NEIGHBOR, NOT A NUMBER.



WE OFFER:

- A VARIETY OF HOME LOANS FOR A RANGE OF CREDIT SCORES
- STEP-BY-STEP PERSONALIZED GUIDANCE
- FAST UNDERWRITING AND LOAN CLOSINGS
- COMPETITIVE FINANCE RATES AND FEES

CALL FOR A COMPLEMENTARY CONSULTATION.



Bill Holleman  
Sr. Mortgage Originator  
NMLS:184040

 bholleman@primelending.com  
 www.billholleman.com

512-381-4782 (Direct)  
866-563-0717 (Toll Free)  
866-217-2405 (E-Fax)

1717 W. 6th Street,  
Ste 340, Austin, TX 78703

Home Loans Made Simple<sup>SM</sup>

All loans subject to credit approval. Rates and fees subject to change. Mortgage financing provided by PrimeLending, a PlainsCapital Company. Equal Housing Lender. © 2015 PrimeLending, a PlainsCapital Company. PrimeLending, a PlainsCapital Company (NMLS: 13649) is a wholly owned subsidiary of a state-chartered bank and is an exempt lender in TX. V121013



2380

40  
BEERS  
ON TAP

130  
BOTTLED  
BEERS



20 HI-DEF TV'S

POUTINE

BIG, FRESH, FORK & KNIFE  
ALL-NATURAL SANDWICHES

AVAILABLE FOR  
PRIVATE PARTIES

2310 MANOR ROAD AUSTIN, TEXAS 78722  
512.243.6702

WWW.HAYMAKERAUSTIN.COM FACEBOOK.COM/HAYMAKERAUSTIN TWITTER.COM/HAYMAKERAUSTIN

"WE ROCK"

# Nature's Treasures

4103 North Interstate 35 Austin, TX 78722 | 512.472.5015  
(Northbound Frontage Road between 38 1/2 St & Airport Blvd)

**TREASURES FROM AROUND THE WORLD**

**The Largest Jewelry, Mineral, Fossil  
Metaphysical Store in Texas**

*Maybe  
The U.S.!*

**We LOVE our Neighbors!**  
Bring in this coupon for 10% off your order!

**Decorate for Spring  
with our Beautiful  
Outdoor Garden Items!**

**VISIT OUR NEW ONLINE STORE!  
CRYSTALSbynature.com**

**NTROCKS.COM**

inviting, becoming, demonstrating

# servant church

+

[servantchurchaustin.org](http://servantchurchaustin.org)

<b>WORSHIP</b> with us	<b>Sunday Gathering</b> Every week, 11:11am Coffee, fellowship + childcare provided
<b>SERVE</b> with us	<b>Low-Cost Legal Immigration Clinic</b> Justice for Our Neighbors: <a href="http://jonaustin.org">jonaustin.org</a> Last Saturday of every month, 11am-1pm
<b>PRACTICE</b> with us	<b>Life Groups</b> Eight diverse small groups meet throughout Austin each week to share community life together

**1605 E. 38 1/2 St. 78722**

- SERVING UP -

*Honest-to-Goodness Good Texas Cooking*

2002 Manor Road – Austin, Texas – 78722  
(512) 479-5006

**OPEN M-F: 11AM – 10PM, S&S: 8AM – 10PM**

[WWW.HOOVERSCOOKING.COM](http://WWW.HOOVERSCOOKING.COM)

SMOKED WINGS 6 FLAVORS

*Now Open -  
Right Across the Street!*

# BIBLIOGRAPHIA



Join the 2017-2018 Art Club  
 Mondays 3:30 - 5:30pm Ages 4-12  
 Make 10 Gifts by Holiday Break!  
 Create a kids community newspaper!  
 10% Discount on Workshops & Camps  
 \$150 a month - September - May

**SCREEN PRINTING CAMP**  
 SEPTEMBER 4TH 8:30-3:30PM  
 Ages 4-12 \$75 includes materials  
 Design & Print your own T-Shirt!

**POSTER PRINTING CAMP**  
 OCTOBER 9TH 8:30-3:30PM  
 Ages 4-12 \$75 includes materials  
 Explore American Indian Artists!  
 Create a multiple layer print!

**BLOCK PRINTING CAMP**  
 NOVEMBER 20 & 21st 8:30-3:30PM  
 Ages 4-12 \$150 includes materials  
 Print & Dye a Special Napkin Set

**HOLIDAYS' LITTLE HELPERS CAMP**  
 DECEMBER 18-22 8:30-3:30PM  
 Ages 4-12 \$330 includes materials  
 Make Gifts, Holiday Card & Giftwrap

**CIVIL RIGHTS PRINTS**  
 JANUARY 15th 8:30-3:30PM  
 Ages 4-12 \$75 includes materials  
 Create Unity-minded Art as a Team  
 To Enroll Contact: delilahknuckley@gmail.com (803)728-4190



**BARREL OF FUN**

**NOW OPEN!**

**LIVE MUSIC,  
 SODA FOUNTAIN TREATS  
 AND MORE!**

LOCATED AT THE NEW  
 ALAMO DRAFHOUSE MUELLER

WWW.BARRELOFUNATX.COM  
 WWW.FACEBOOK.COM/BARRELOFUNATX/

**AUGUST 2017**

**BETTE & JOAN**

**AFS UNLIMA CINEMA CINEMA**

**BETTE & JOAN AUG 3 - 31**

**EX-LADY • GRAND HOTEL  
 JEZEBEL • MILDRED PIERCE  
 WHAT EVER HAPPENED TO BABY JANE?**

**THE DARK MUSICALS OF BOB FOSSE  
 AUG 4 - 20**

**SWEET CHARITY • CABARET  
 ALL THAT JAZZ**

**\$2 off your ticket this month with code  
 "FleaAugust" at AUSTINFILM.ORG**

**OPEN DAILY • FULL BAR & FRESH, LOCAL FOOD • ART HOUSE CINEMA • 6406 N I-35, SUITE 3100 (NEAR ACC HIGHLAND) • AUSTINFILM.ORG**

Published by the Cherrywood  
 Neighborhood Association  
 PO Box 4631, Austin, TX 78765  
 © All rights reserved.

Get noticed and support community by advertising in the FLEA!

flea@cherrywood.org